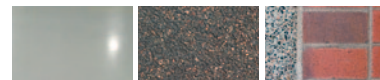


CY5000™ & CY5500™

High-Pressure Surface Cleaning and Water Recovery / Recycling System



Smart cleaning.

A Nilfisk-Advance Brand



CY5000™ & CY5500™

High Pressure Surface Cleaning and Water Recovery / Recycling System

With the help of the revolutionary Cyclone™ surface-cleaning technology, the Advance CY5000/CY5500 delivers unmatched deep cleaning of concrete and other hard surfaces by scouring away dirt, tire marks, and petroleum deposits, with no discharge into the environment or damage to the cleaned surface. Virtually all water is reclaimed and contaminants are filtered out, allowing for the re-use of the reclaimed water for extended cleaning cycles. This remarkable self-contained system delivers the most environmentally-friendly outdoor surface cleaning solution by minimizing water usage, eliminating chemical use and water runoff, and aiding in EPA compliance. One-pass cleaning by a single operator dramatically increases productivity and provides a greater return on investment.

Ideal applications include:

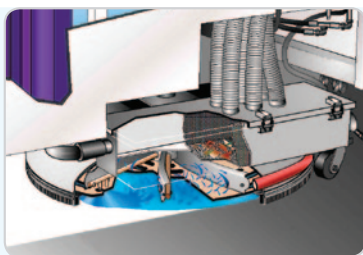
- Parking Garages and Lots
- Resorts and Theme Parks
- Sidewalks and Roadways
- Transit Authorities
- Convention Centers
- Airport Plane Terminals
- Glycol Recovery
- Environmental Clean-up
- Spill Recovery
- Public Works

Cyclone™ surface-cleaning technology.

Outdoor surface cleaning will never be the same.

Here's how it works:

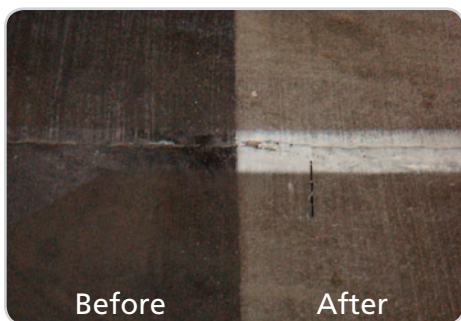
- Cleaning head with 8 turbine blades rotates at high speed to create a vortex of air and water equivalent to a category 4 hurricane.
- Continuous movement keeps water from pooling and allows incoming high-pressure water to directly contact the surface for maximum cleaning power.



- Waste water scours away dirt as it's pulled over the surface to complement the pressurized water and deeply clean in a single pass.
- The rotational movement of the turbine blades creates lift that reclaims water, which is pumped back to the reclaim tank—without a vacuum system.

- A multi-stage filtration system helps to minimize water usage and extend the cleaning cycle by removing dirt and contaminants, converting reclaimed water into reusable clean water.

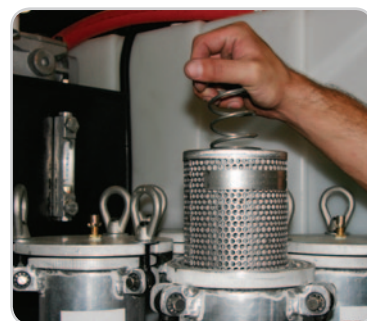




Ground-in dirt, heavy buildup—even surface stains—are removed in a single pass with no damage to the surface.



Integrated curb cleaner for the vertical faces of curbs.



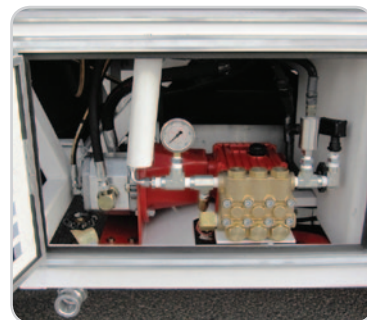
Four washable, lifetime stainless steel filters allow for the reuse of reclaimed water.



Comfortable, ergonomically designed cab with intuitive operator controls.



Large 3 inch drain makes cleanup fast and simple.



Easy access to high pressure water pump, adjustable from 1,200 to 4,000 psi.

Cyclone CY5000/5500™ Technical Specifications

Model	CY5000 - ST	CY5000	CY5500
Operator Cab Style	Open cab design	Open cab design or enclosed cab design with heater & air conditioning	
Cleaning Path	34 in (86 cm) consistently cleaned		
Water Pump	Triplex plunger capable of 4,000 psi (275 bar) at 5 GPM (19 LPM)		
Output Pressure	Fixed 4,000 psi (275 bar)	Infinitely variable 1,200 psi (83 bar) – 4,000 psi (275 bar)	
Cleaning and Recovery Head	Hydraulically powered, cast aluminum 40 in (101.6 cm) diameter with protective shield. - Patented Design		
Water Heating System	None	Electronically fired, inline diesel powered heater with 240,000 BTU/hr output	
Filtration System	None	None	Multi-stage filtration system consisting of two (2) 75 um and two (2) 30 um washable/ reusable filter elements, each with 1,500 in² of filtration surface area
Water Tanks	Fresh cleaning water supply: 360 gal (1,363 L) Recovery tank capacity: 315 gal (1,192 L) Plastic with easy fill and clean out design		390 gal (1,476 L) combination supply and recovery tank that recycles and reuses water in continuous cycle. Fiberglass with easy fill and clean out design
Cleaning Attachments (Standard)	None	High pressure curb and gutter cleaning system and high pressure cleaning wand system standard with 25 feet (7.6 m) of hose with reel	
Steering	Front wheel steering with hydraulic power assist		
Drive System	Two (2) speed hydrostatic system provides accurate speed control at cleaning speeds with a maximum transport speed of 12 mph (19.3 kph). Power delivered to front wheels		
Controls	All cleaning actions controlled from operator seat with ergonomic operator interface		
Brakes	Rear heavy duty automotive style 11 in hydraulic drum brake with additional hand lever actuated parking brake		
Fuel Tank	18 gal (68 L)		
Chassis Frame Construction	Welded structural steel tubing with 3 in by 2 in tubing with 0.120 in wall thickness		
Engine	Kubota Interim Tier IV Liquid Cooled Turbo Diesel, 2.4 L, 59 hp (44 kW)		
Open Cab	Kubota Interim Tier IV Liquid Cooled Turbo Diesel, 2.6 L, 66 hp (49 kW)		
Enclosed Cab with A/C			
Weight	Empty: 4,678 lb (2,121 kg) Full: 7,680 lb (3,482 kg)	Empty: 5,280 lb (2,394 kg) Full: 8,282 lb (3,755 kg)	Empty: 5,880 lb (2,667 kg) Full: 9,132 lb (4,142 kg)
Dimensions	154 in x 56 in x 77.5 in (3.9 m x 1.4 m x 1.9 m)		

Specifications are subject to change without notice.

14600 21st Avenue North
Plymouth, MN 55447-3408
www.advance-us.com
Phone 866-429-8175
Fax 800-989-6566

240 Superior Boulevard
Mississauga, Ontario, Canada L5T 2L2
www.nilfisk-advance.ca
Phone 800-668-8400
Fax 800-263-5111

Ask about our leasing options.

©2012 Nilfisk-Advance, Inc. L3055A 3-20-12

